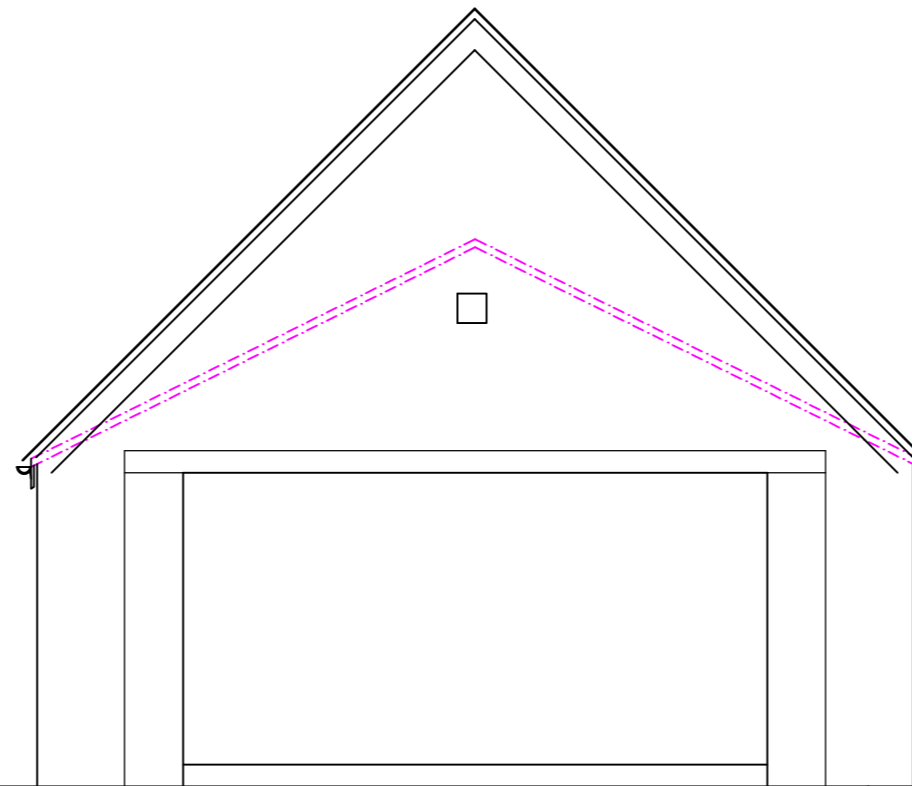
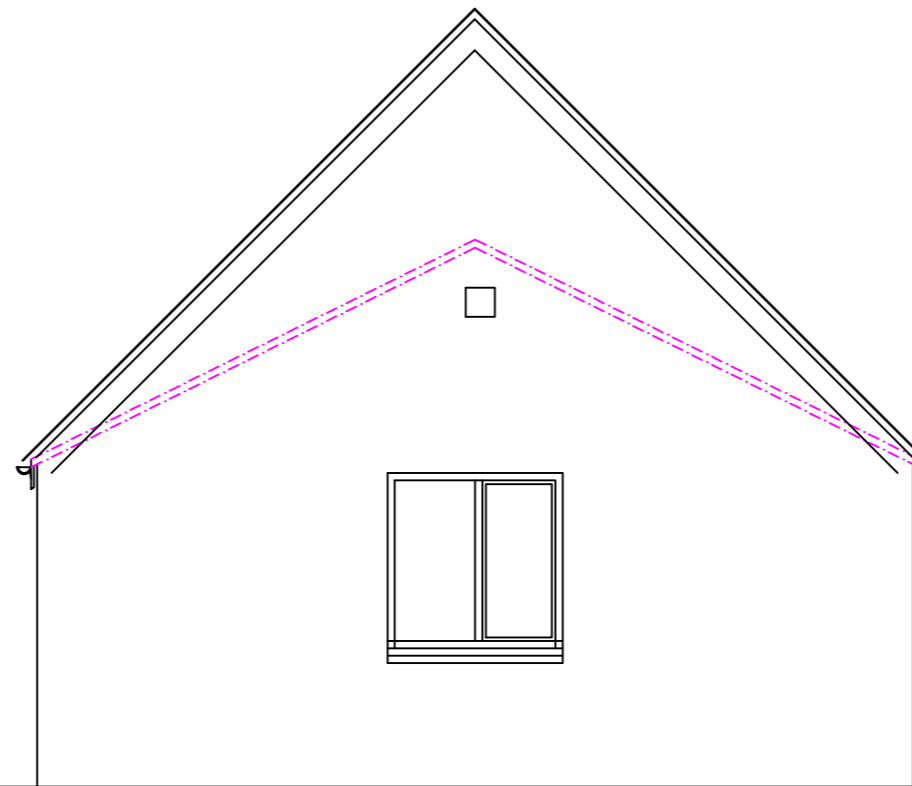


215x 215 air brick ventilators
at high and low level.

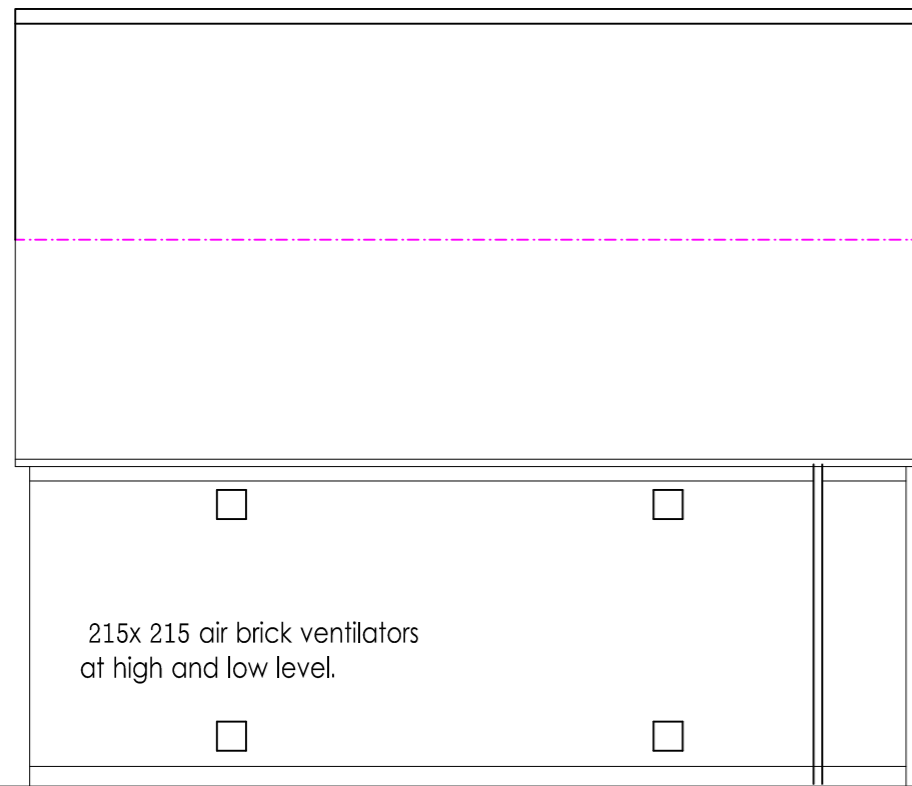
SIDE ELEVATION



FRONT ELEVATION

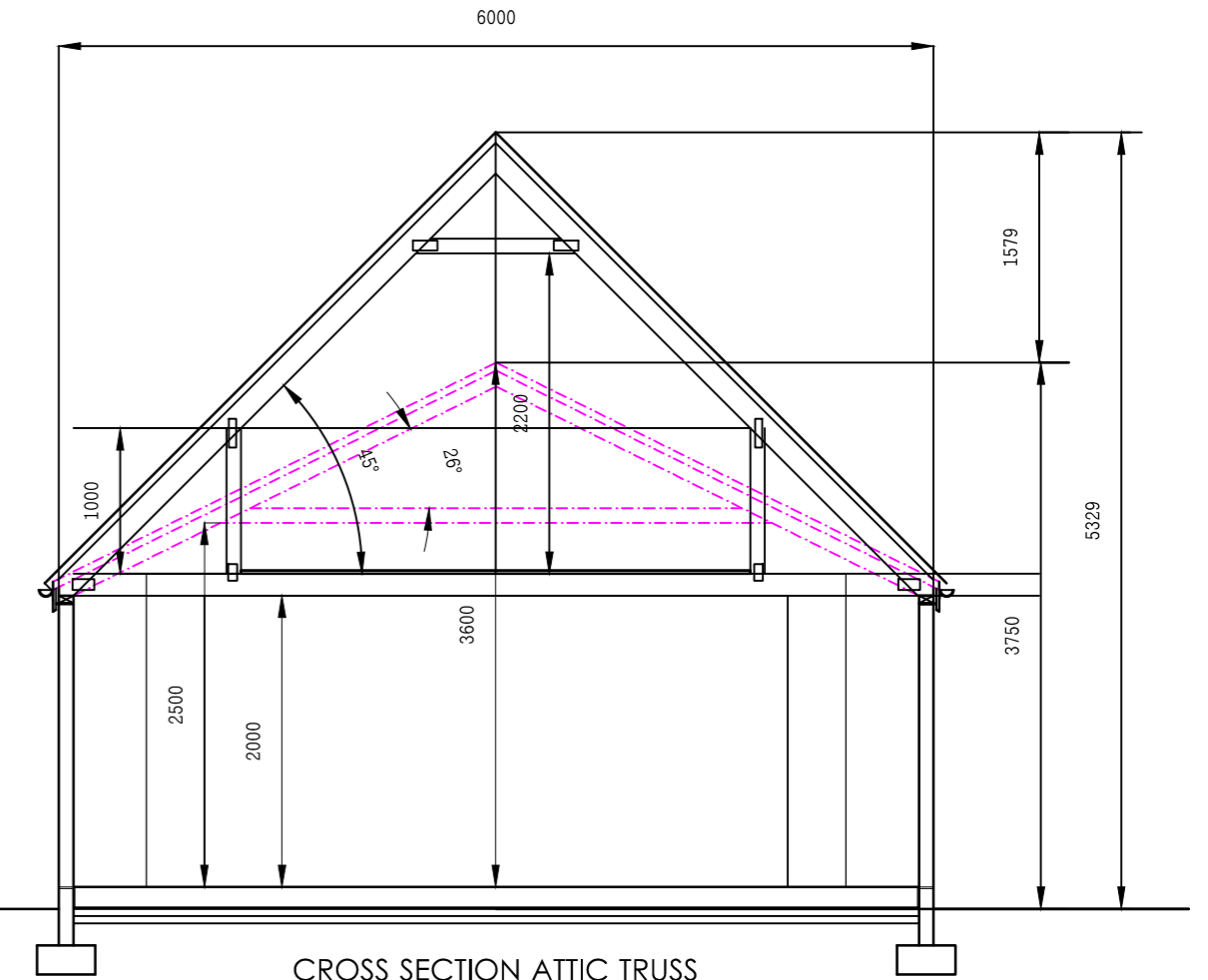


REAR ELEVATION

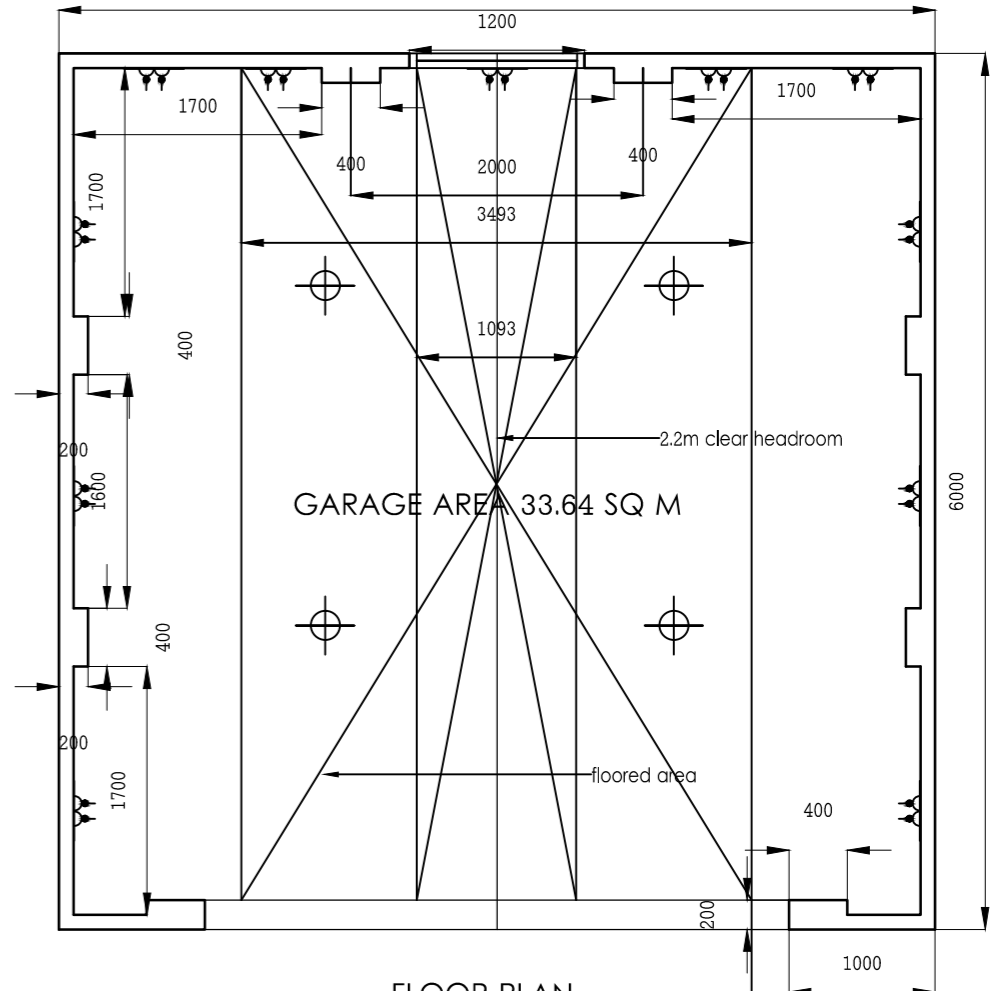


215x 215 air brick ventilators
at high and low level.

SIDE ELEVATION



CROSS SECTION ATTIC TRUSS



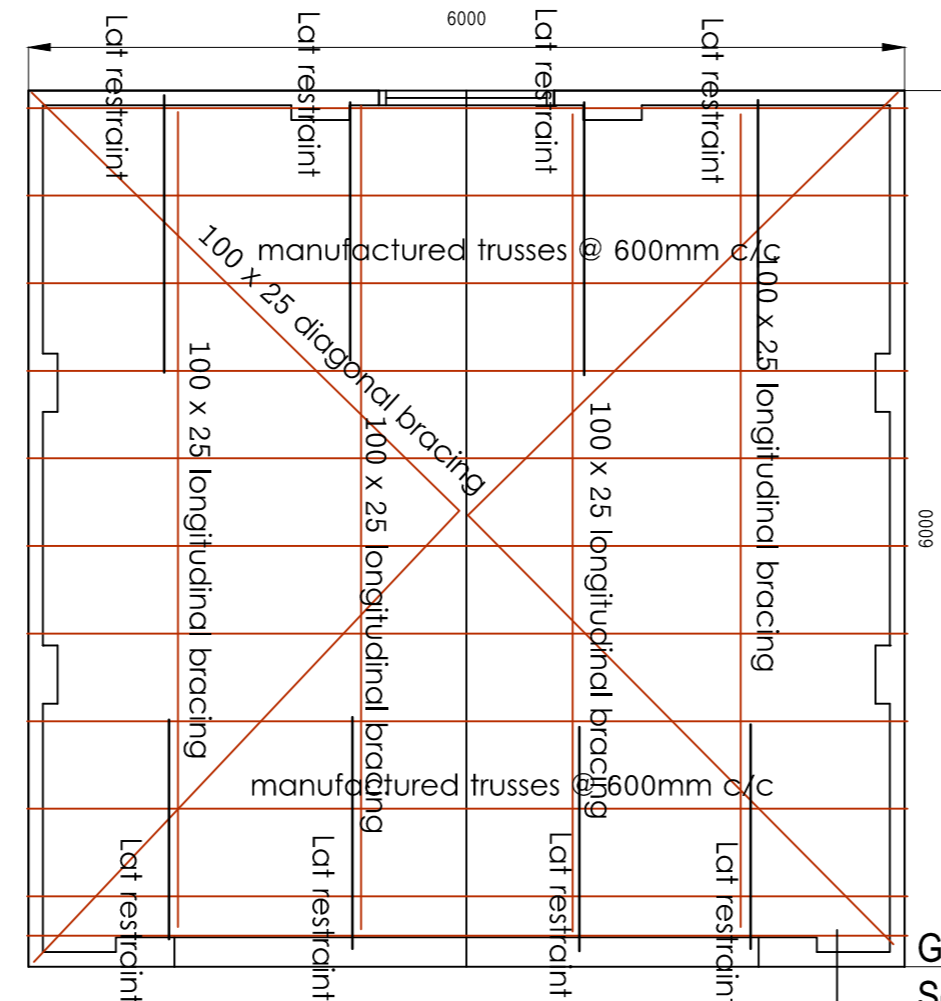
FLOOR PLAN

ELECTRICAL LEDGEND

- light fitting
- light fitting
- twin switched socket outlet
- spur outlet

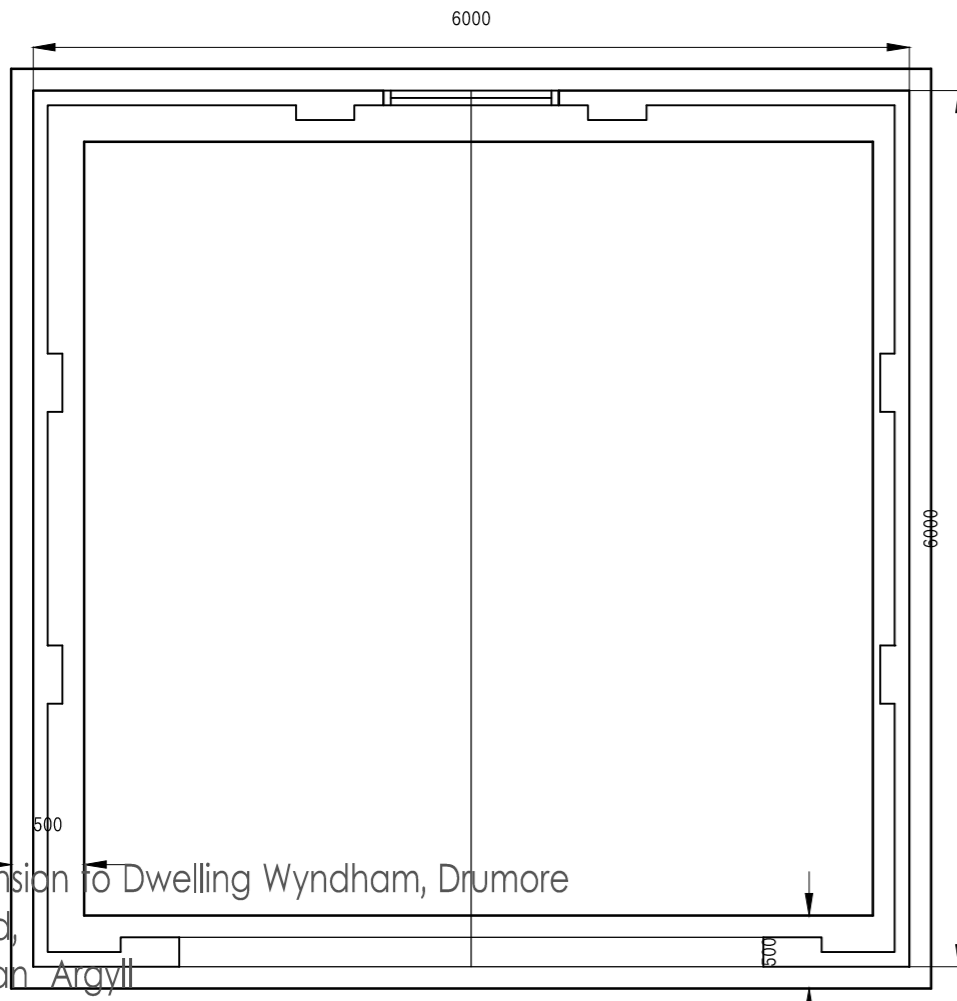
NOTES:

1. ALL TRUSSES/RAPERS TO BE FIXED WITH "SIMPSON" TYPE TOP TRUSS CLIPS AT EAVES LEVEL.
2. "SIMPSON" TYPE L11810 VERTICAL RESTRAINT STRAPS (7 FRINGS) TO BE FIXED AT 1.8m CENTRES OR BOTH SIDES OF MAIN OPENINGS, FULLY IN ACCORDANCE WITH MANUFACTURERS INSTRUCTIONS.
3. "SIMPSON" TYPE H11815 LATERAL RESTRAINT STRAPS (6 FRINGS) SHOULD BE FIXED AT FIRST FLOOR AND ROOF LEVEL AT 1.8m CENTRES, FULLY IN ACCORDANCE WITH MANUFACTURERS INSTRUCTIONS - FIX WHERE TIMBER JOISTS/RAPERS ARE PARALLEL TO MAIN WALLS AND GABLE APICES.
4. DRAWING TO BE READ IN CONJUNCTION WITH ALL ARCHITECTS DETAILS. ALL DIMENSIONS FROM ARCHITECTS DRAWINGS.
5. TIMBER FRAME ANCHOR STRAPS TO BE "SIMPSON" TYPE ITSS FIXED TO MANUFACTURERS INSTRUCTIONS.
6. INTERNAL LEAF BLOCKWORK TO BE "ROBLESSE" OR SIMILAR PRECAST CONCRETE UNLESS OTHERWISE SHOWN, INSTALLED TO MANUFACTURERS INSTRUCTIONS, SIZES AS FOLLOWS:
 - OPENING UP TO 1.8m - TYPE A (100 x 10mm)
 - OPENING 1.8m TO 2.4m - TYPE C (100 x 150mm)
 - OPENING 2.4m TO 3.8m - TYPE K3
7. FOUNDATIONS TO BE GRADE C35 CONCRETE LAID ON CLEAN SOUND BEDROCK IN ACCORDANCE WITH BS 8004. SHOULD ANY VARIATION IN GROUND CONDITIONS BE ENCOUNTERED ON THE CONTRACTOR TO CONTACT JOHN FEEN ASSOCIATES FOR ADVICE.
8. FOUNDATIONS TO BE 150mm DEEP, WITH 150mm SCARCEMENTS, WITH MINIMUM 150mm TOP COVER.
9. WALL TIES AT TIMBER FRAME TO BE "SIMPSON" TYPE BT50N INSTALLED TO MANUFACTURERS INSTRUCTIONS WITH 75mm PER SQUARE HEREIN. TIES AT CAVITY BLOCKWORK TO BE "SIMPSON" TYPE LWS MIN. 7 TIES PER SQ. M. TIES AT EVERY COURSE AT OPENING INGOES AND MULLIONS.
10. ALL TIMBER CONNECTIONS AND DETAILS NOT OTHERWISE SHOWN TO BE IN ACCORDANCE WITH CURRENT TRADA RECOMMENDATIONS.
11. ALL EXTERNAL WALLS TO BE SHEATHED WITH 9mm OSB WITH 3.75mm DIAMETER WALLS AT 150mm CENTRES.
12. TRIMMED JOISTS OR RAPERS AND TRIMMERS TO BE FIXED WITH "SIMPSON" TYPE HA. COE HANGERS OR SIMILAR APPROVED FIXED TO MANUFACTURERS INSTRUCTIONS.
13. ALL STEELWORK TO BE IN ACCORDANCE WITH BS 5950. STEELWORK TO BE THOROUGHLY CLEANED AFTER FABRICATION AND HAVE APPROVED 2 PACK EPOXY ZINC PHOSPHATE PRIMER (UNLESS NOTED AS GALVANISED).
14. TIMBER UNITS IN WALLS (UNLESS OTHERWISE NOTED) FORMED FROM 150mm STUDS TO BE 3 NO 200 x 50mm GRADE C24 TIMBERS WELL SPIKED TOGETHER.
15. ALL GLAZED FRAMES AND WINDOWS/DOORS TO BE FIXED TO SURROUNDING TIMBER PANELS WITH PROPRIETARY STAINLESS STEEL WINDOW FRAME TIES AT 600mm CENTRES.
16. STRUCTURAL TIMBER TO BE GRADE C16 UNLESS OTHERWISE NOTED.
17. MOVEMENT JOINTS IN BLOCKWORK CLADDING TO BE LOCATED MAX 3m FROM CORNERS AND AT MAX 6m SPACING ELSEWHERE. AT MOVEMENT JOINTS IN INTERNAL LEAF BLOCKWORK, INSTALL "SIMPSON" TYPE ST5000B STEEL BRIDGING TIES AT EVERY COURSE INSTALLED TO MANUFACTURERS INSTRUCTIONS.
18. ENGINEERED TIMBER FLOOR SYSTEM TO BE DESIGNED & SUPPLIED BY SPECIALIST IN ACCORDANCE WITH PERFORMANCE SPECIFICATION PROVIDED BY JOHN FEEN ASSOCIATES.
19. MANUFACTURED ROOF TRUSS SYSTEM TO BE DESIGNED AND SUPPLIED IN ACCORDANCE WITH THE PERFORMANCE SPECIFICATION PROVIDED BY JOHN FEEN ASSOCIATES.



ROOF PLAN

GARAGE WITH ATTIC PLANS
Scale 1:50
24 June 2018



FOUNDATION PLAN

Extension to Dwelling Wyndham, Drumore
Road,
Oban Argyll
PA34 4PG
D SLOSS & L STEWART

Building Design Studio constructed in accordance with Small Buildings Structural
Inveresregan, Section 1.D 39,40,41 & 42.
Ardchattan
Argyll
PA37 1RG
07766394079
inveresregan@lineone.net

Job Number
BDS 303/GA2